

# Plant Community Footrace

Ochoco National Forest & Crooked River  
National Grassland



# Native vs. Invasive Plants

- Native = adapted to local environments, local controls, creates food and habitat for wildlife



Biological (living organisms) Controls

# Native vs. Invasive Plants

- Invasive = exotic weeds, introduced, takes away food and habitat from wildlife, hurts environment, human health, or the economy.
- Grows and reproduces quickly, spreads fast, out-competes native plants



# What makes a successful plant?

- What makes a successful plant?
  - Growth, reproduction, dispersal, and ability to recover from disturbances.
    - Some plants have better or more attractive flowers for pollinators (bees, butterflies, insects, bats) to assist in reproduction
    - Native plants have the ability to outcompete other non-native plants
    - Others can recover from disturbances (fire, drought, and human recreation) better
    - Some plants do a better job at growing and spreading quickly to make sure soil doesn't get washed away on banks of streams
    - Certain plants are better forage/browse (food) for wildlife and grazing livestock (cattle, sheep)

# What makes a successful plant?

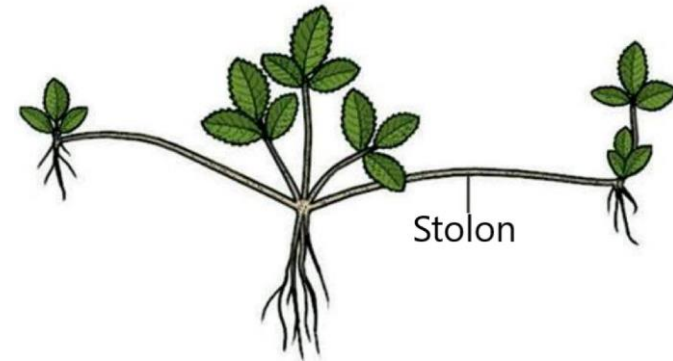
Grows quickly with limited resources

Desert = What resource is limited ?



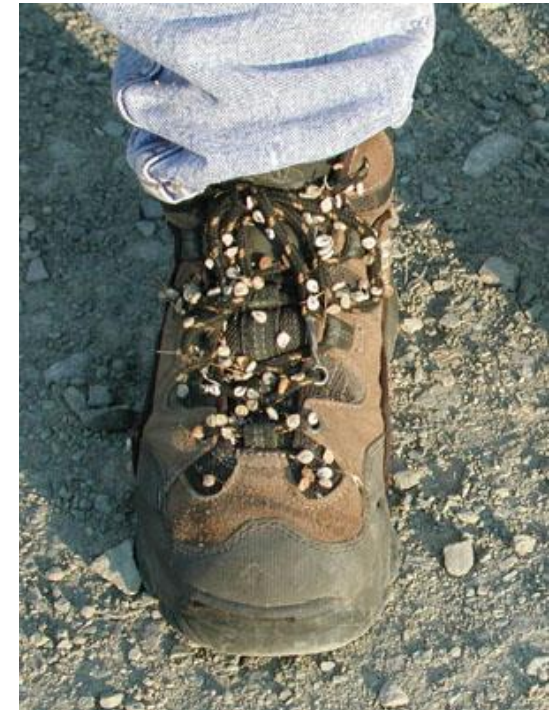
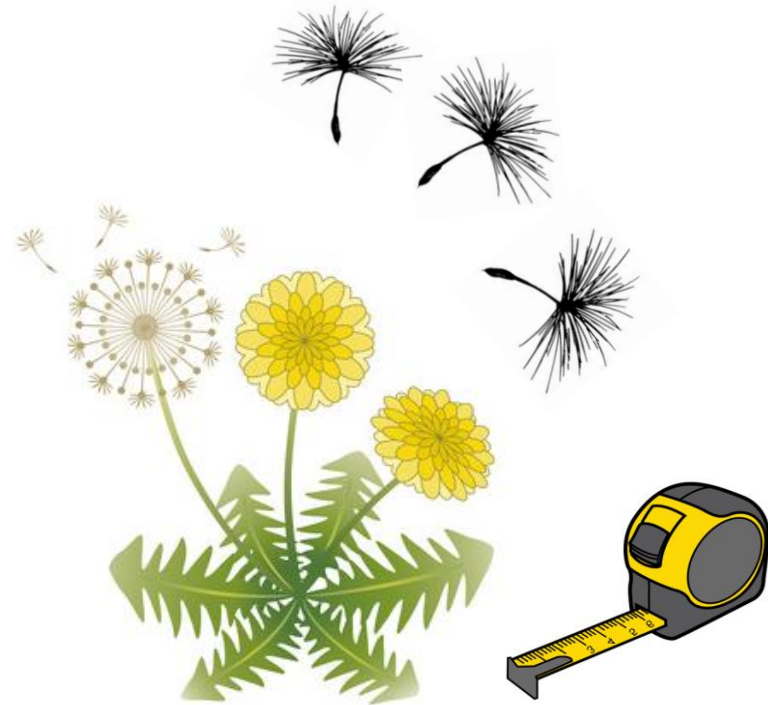
# What makes a successful plant?

Reproduces quickly



# What makes a successful plant?

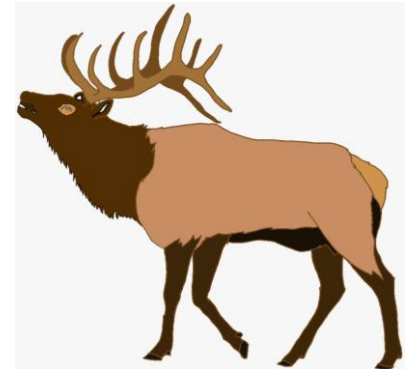
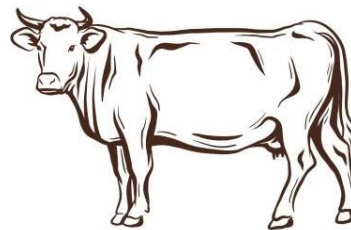
Disperses (spreads) quickly and far  
Seed transportation mechanisms



# What makes a successful plant?

Ability to recover or resist disturbances

Disturbance = wildfire, drought, grazing (livestock & wildlife), human recreation





Do you know of any invasive plants/weeds near your home?



# Knapweeds-Spotted, Diffuse, & Russian



# Star Thistle



# Thistles-Bull, Canada & Scotch



# Medusahead rye



# Eurasian Water Milfoil



**Native**



**Wild  
Strawberry**

**Invasive**



**Hounds-  
tongue**

- All plants can grow, reproduce, and disperse

(STEPS FORWARD)

- But response to disturbance differs between plant species

(STEPS BACKWARDS)

OR

(STEPS FORWARD)



# WILD STRAWBERRY

## Life Stage

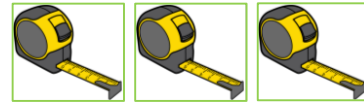
**Growth:**



**Reproduction:**



**Disperse:**



## Disturbance Event

**Browse:**



**Drought:**



**Fire:**



**Human Recreation:**



**Removal Treatment: none**



# HOUNDSTONGUE

## Life Stage



## Disturbance Event



If invasive, response to manual vs. herbicide treatment?





## Questions at the End

- Why you think some plants did better than others?
- If your species didn't make it into the Plant Community, why not?
- Was there a particular disturbance event that helped or hurt your species?