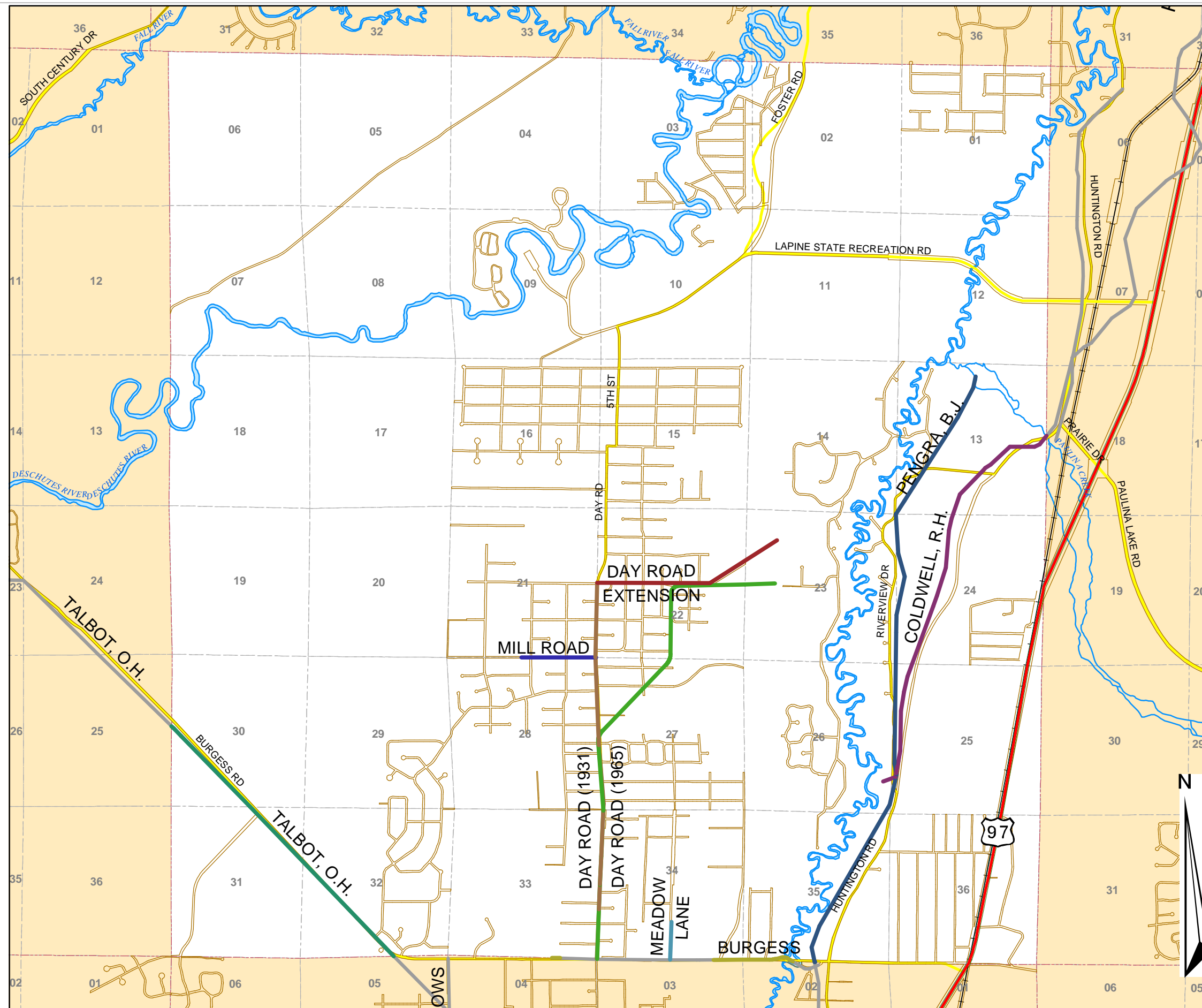


# Legacy Roads

T21S, R10E, wm.



KEY

## NAME, ROW WIDTH, ESTABLISHED DATE

- BURGESS, 60, 7/12/1928
- COLDWELL, R.H., 60, 1/8/1903
- DAY ROAD (1931), 60, 1/1/1931
- DAY ROAD (1965), 60, 1/20/1965
- DAY ROAD EXTENSION, 60, 4/5/1972
- MEADOW LANE, 50, 1/4/1961
- MILL ROAD, 50, 1/1/1949
- PENGRA, B.J., 60, 7/9/1898
- TALBOT, O.H., 80, 11/8/1915

Printed: March 4, 2002

The information on this map was derived from digital databases on Deschutes County's G.I.S. Care was taken in the creation of this map, but it is provided "as is". Deschutes County cannot accept any responsibility for errors, omissions, or positional accuracy in the digital data or the underlying records. There are no warranties, express or implied, including the warranty of merchantability or fitness for a particular purpose, accompanying this product. However, notification of any errors will be appreciated.

## Deschutes County Road Department

Map Created By:



**John Anderson, GIS Specialist**  
 Phone: (541) 322-7102  
 Email: johna@co.deschutes.or.us  
 Address: 61150 SE 27th St  
 Bend, OR 97702

Note: The data from which this map was compiled is a work in progress and is currently incomplete. The locations of the roads on this map are for pictorial purposes only. Some of these roads, or segments of them, may have been vacated or never established. Please verify all Right of Way information with the Deschutes County Road Department.

