

Deschutes County Health Services

COVID-19 Public Health Update

Nahad Sadr-Azodi
Public Health Director

Emily Freeland
COVID-19 Response and Recovery Supervisor

Michael Johnson, PhD
Senior Data Scientist, St. Charles Health System

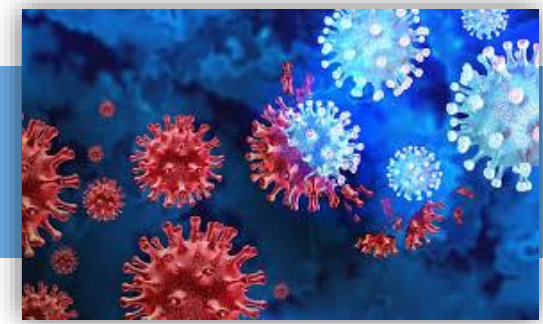
Crystal Sully, BSN
Vaccine Operations Supervisor



BoCC Meeting | January 5, 2022

New Developments

The Omicron Variant



What We Are Learning

- Shorter incubation period
- Increased transmissibility
- Shorter incubation period
- Disease severity
- Efficacy of existing treatments
- Extent of immune evasion

What We Can Do

- Individual risk assessment
- Get vaccinated or boosted
- Wear a mask
- Get tested
- Physical distancing
- Hygiene



Booster Recommendations



COVID-19 Booster Dose Updates FDA approved for 12 to 15 year-olds

On January 3, the FDA authorized booster doses of the Pfizer vaccine for 12 to 15 year olds.

On January 5, the CDC meets to review the FDA's recommendation.

The Western States Scientific Safety Review Workgroup will meet afterwards to review. The workgroup and OHA will issue guidance.

The Oregon Health System stands ready to implement after federal and state authorities have made their decision.



CDC Guidance Updates

COVID-19 Isolation and Quarantine Guidance

Updated by CDC on 12/27/2021

If you test positive for COVID-19 (Isolation)

Everyone, regardless of vaccination status should:

- Stay home for 5 days.
- If you have no symptoms or your symptoms are resolving after 5 days, you can leave your house.
- Continue to wear a mask around others for 5 additional days.
- If you have a fever, continue to stay home until your fever resolves.

If you were exposed to someone with COVID-19 and...

Have been boosted

OR

Completed the primary series of Pfizer or Moderna vaccine within the last 6 months

OR

Completed the primary series of J&J vaccine within the last 2 months

- Wear a mask around others for 10 days.
- Test on day 5, if possible.
- *If you develop symptoms get a test and stay home.*

Completed the primary series of Pfizer or Moderna over 6 months ago and are not boosted

OR

Completed the primary series of J&J over 2 months ago and are not boosted

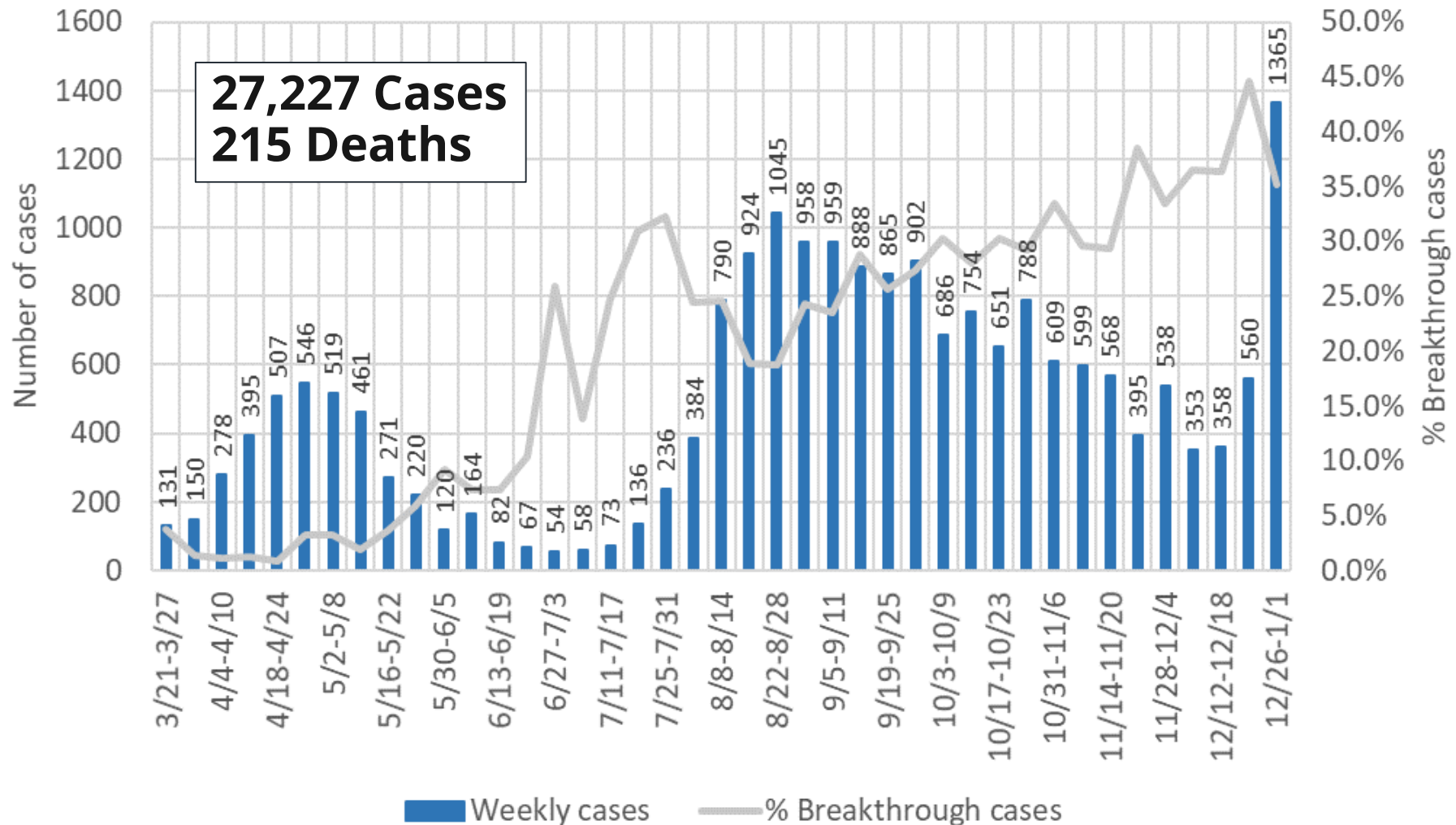
OR

Are unvaccinated

- Stay home for 5 days.
- After that continue to wear a mask around others for 5 additional days.
- If you can't quarantine you must wear a mask for 10 days.
- Test on day 5 if possible.
- *If you develop symptoms get a test and stay home.*



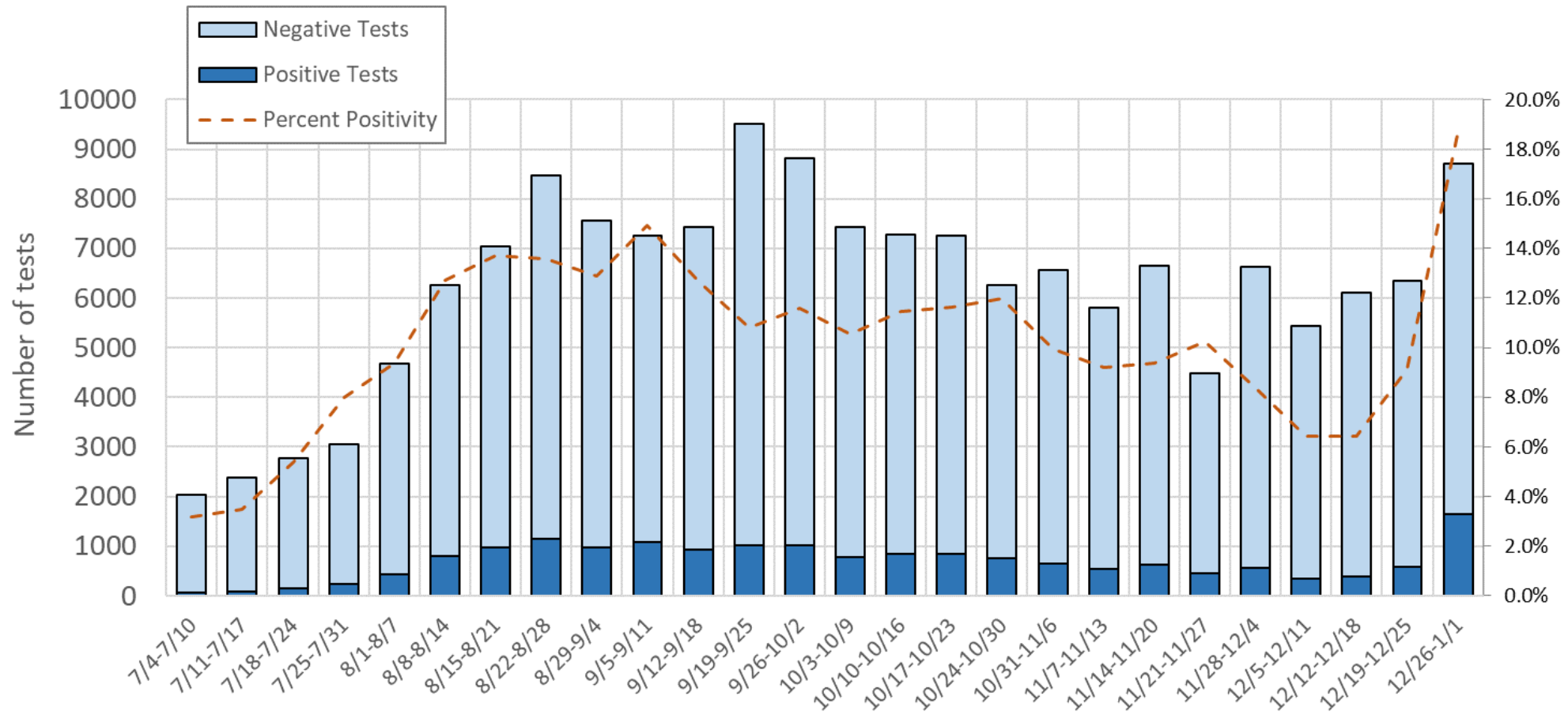
COVID-19 Cases Increasing



Note. Data are shown based on the date a case first became identified as a case. Data subject to change.



COVID-19 Test Positivity Increasing



Note. Tests and test results are assigned to a calendar week based on the date the laboratory report was created. Data subject to change.



Testing and Vaccination

No-Cost Rapid PCR Testing

No-cost rapid PCR testing available by appointment in Redmond and Bend

- Schedule an appointment at cur.tv/Redmond or cur.tv/Bend
- Results in 1 to 2 hours
- No insurance required, if you have insurance it may be billed



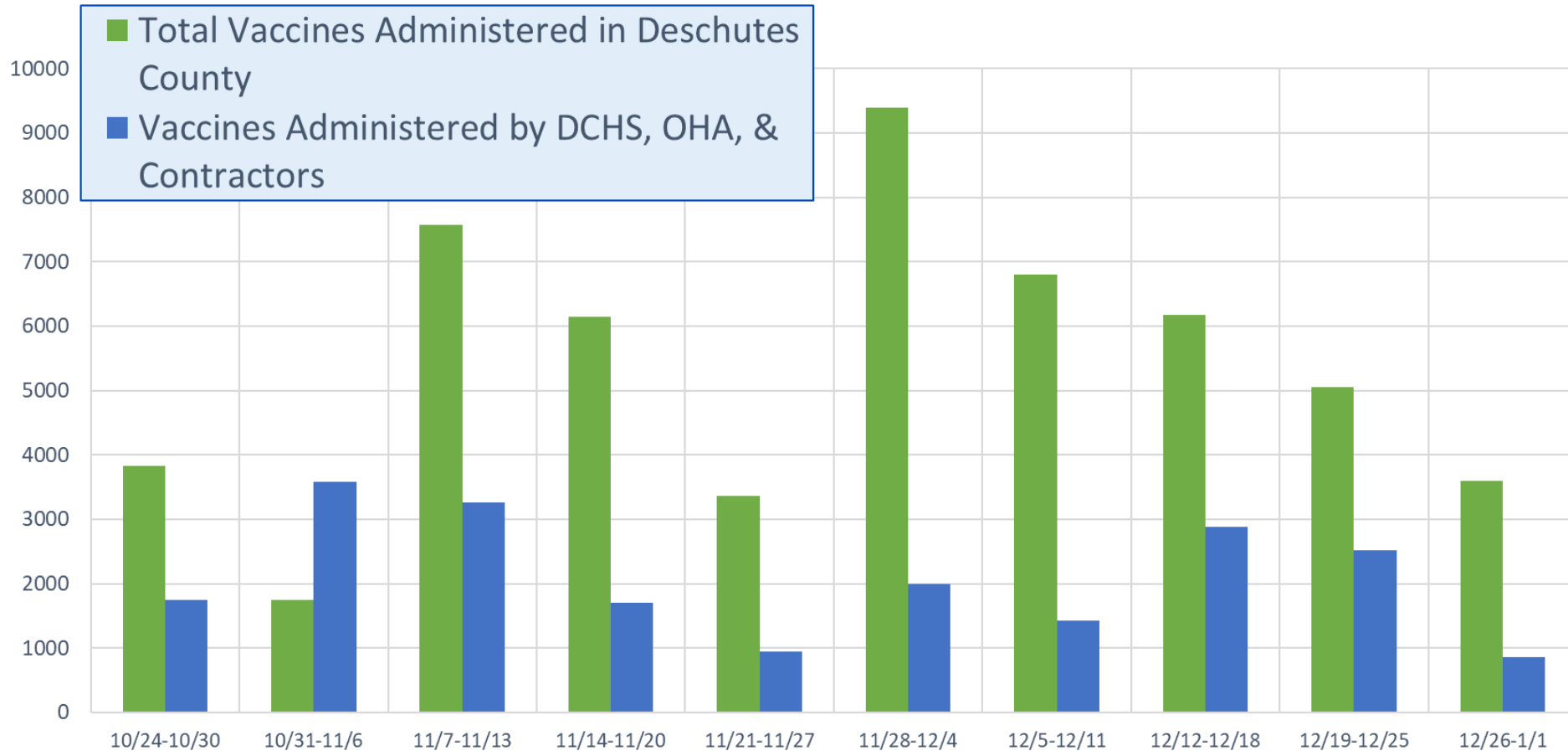
Approved Vaccines by Age Group

	Pfizer	Moderna	Janssen
5-11 year olds	1 st and 2 nd doses		
NEW → 12+	1 st , 2 nd , & Booster doses		
18+	1 st , 2 nd , & Booster Doses	1 st , 2 nd , & Booster Doses	1 st Dose & Booster

If you are not sure you qualify for a booster dose, reach out to your PCP or call **541.699.5109**



Weekly Vaccination Volume



Community Pop-Up Clinics



Age 12+, ALL Manufacturers

- Sisters Firehouse-Mondays
- La Pine Library-Tuesdays
- Larkspur Community Center-Tuesdays
- Bend Library-Wednesday
- Redmond City Hall-some Thursdays

Age 5-11, 12+ family, Pfizer ONLY

- Juniper Elementary- some Thursdays
- Pilot Butte Middle School- some Thursdays
- Dates TBA- check [website](#)



Help with Questions



Frequently Asked
Questions

www.deschutes.org/covid19vaccine

Email assistance

healthservices@deschutes.org

COVID-19 Vaccine
Hotline

Monday–Friday 9am-5pm

(541) 699-5109



Medical System

Creating America's healthiest community, together.



COVID-19 Update

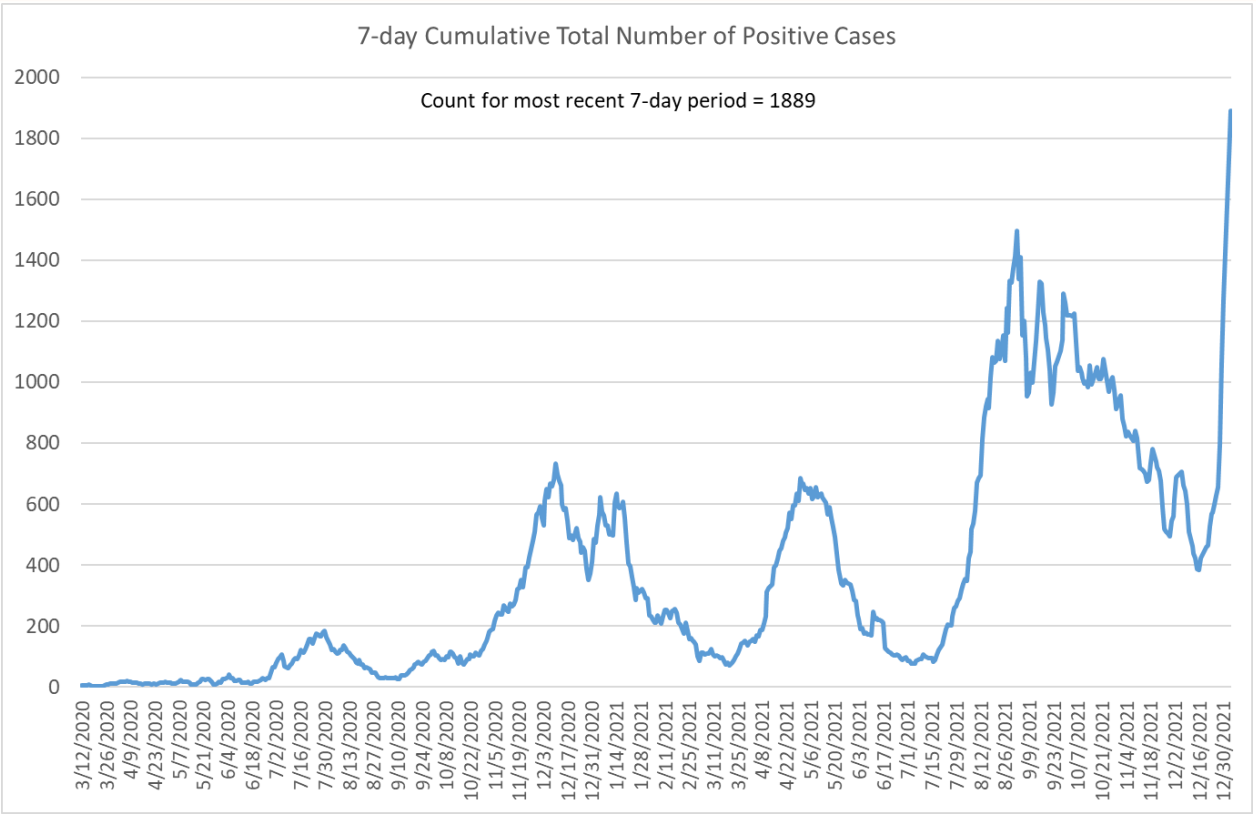
January 4, 2022

Michael Johnson, Ph.D.

Senior Data Scientist, St. Charles Health System

Positive Cases and Positivity Rate in Central Oregon

- Positive cases, positivity rate and testing volume are all rising.
- Combined effect of:
 - Omicron variant prevalence.
 - Christmas gatherings
 - Colder weather
 - Hyper-awareness of omicron



Source: Case counts by county: <https://govstatus.egov.com/OR-OHA-COVID-19>

Testing Volume and Positivity Rate for Week Ending 01/02				
	Updated:	1/4/2022		
	Pos	Neg	Total	Pos Rate
Crook	136	686	822	16.5%
Deschutes	1638	7074	8712	18.8%
Jefferson	148	821	969	15.3%
Tri-County	1922	8581	10503	18.3%

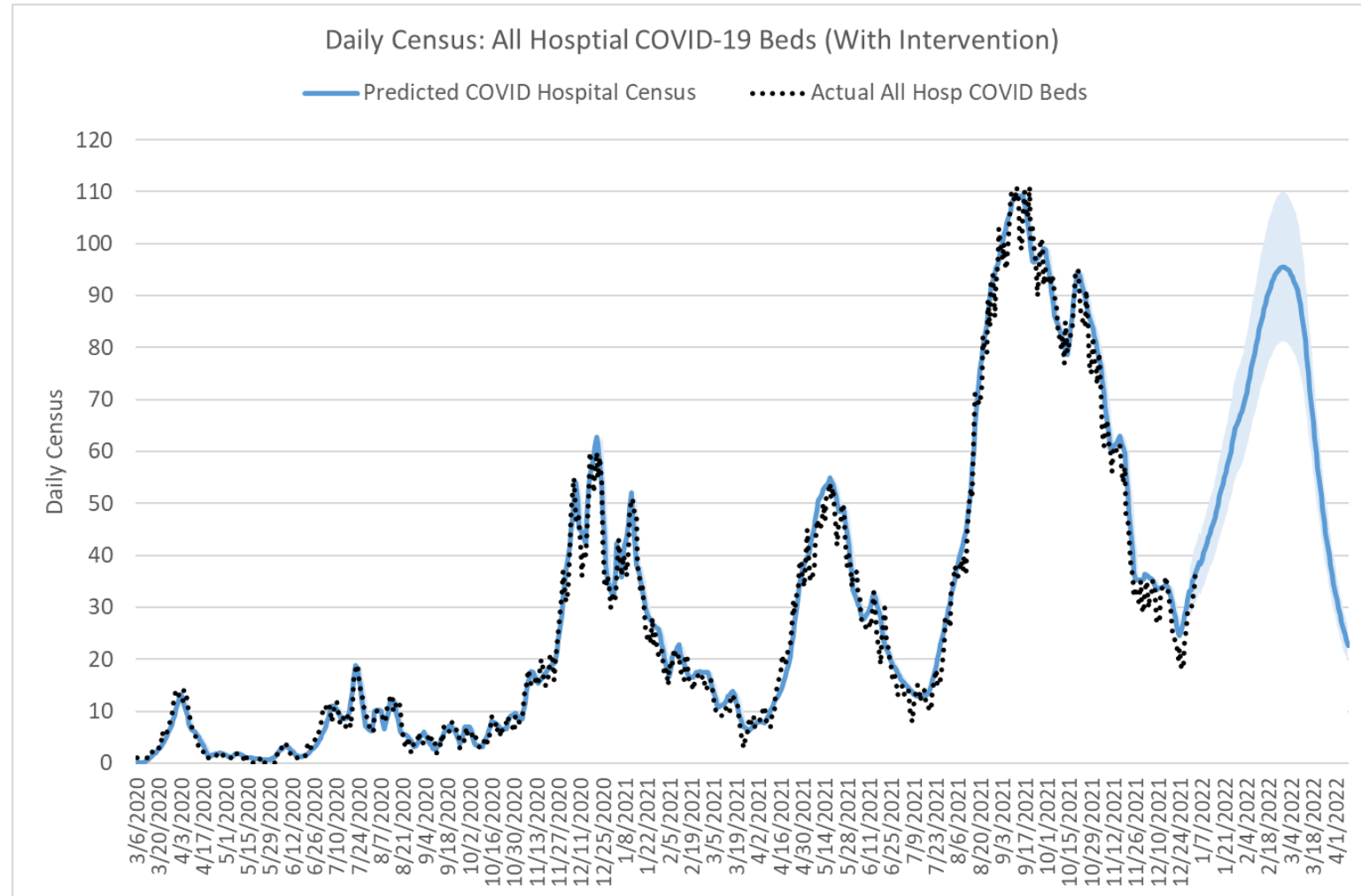
Source: <https://public.tableau.com/app/profile/oregon.health.authority.covid.19/viz/OregonHealthAuthorityCOVID-19DataDashboard/OregonsCOVID-19ELRsOverTime>

Note: Data through January 3, 2022



Predicted COVID Hospital Census

- These are predictions for “patient throughput” not midnight census.
- Expect to see hospitalization increase within the next week.
- The model is **extremely** sensitive to parameters:
 - Transmissibility
 - Severity
 - Immune escape
 - Booster volume

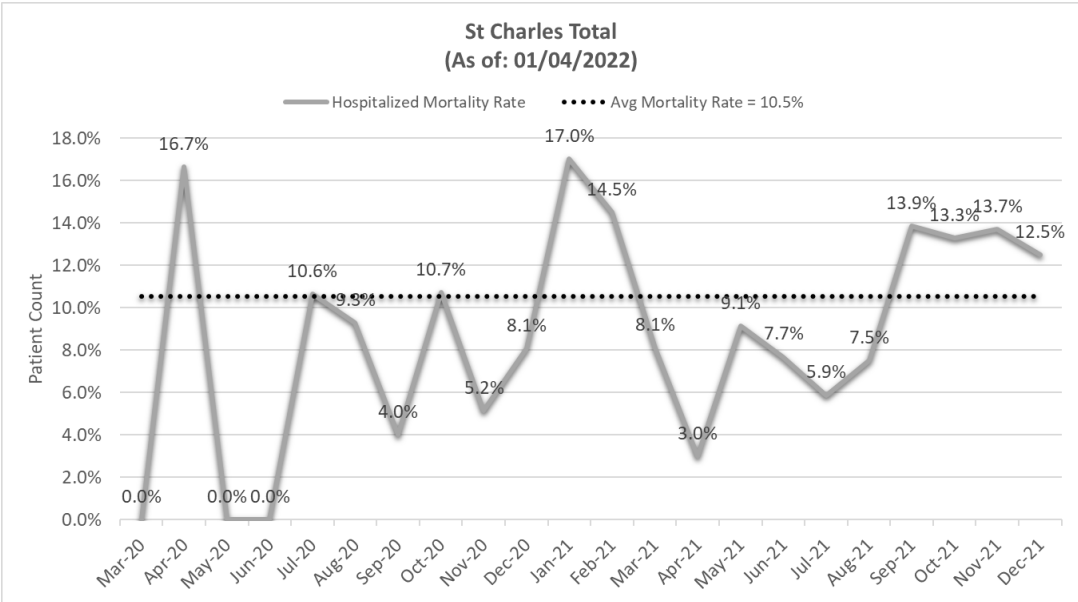
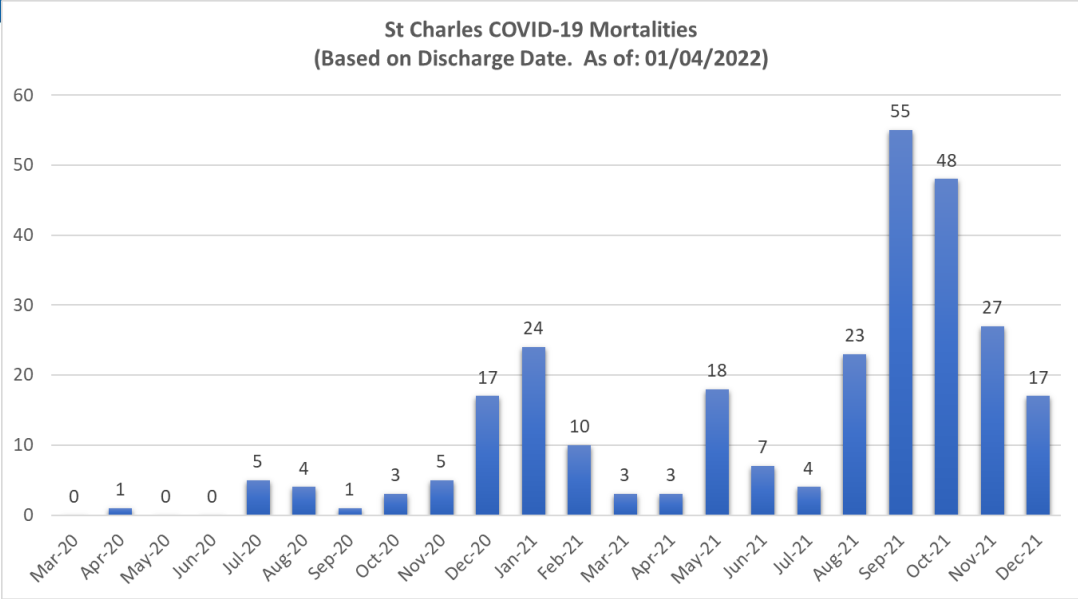


Note: Data through January 3, 2022

Source: St. Charles COVID-19 Susceptible, Infected and Removed (SIR) model

COVID-19 Mortality and Mortality Rate

- Yes, COVID-19 deaths have trended down for the past 3 months.
- However, the mortality rate for hospitalized patients has remained very high throughout the delta surge.



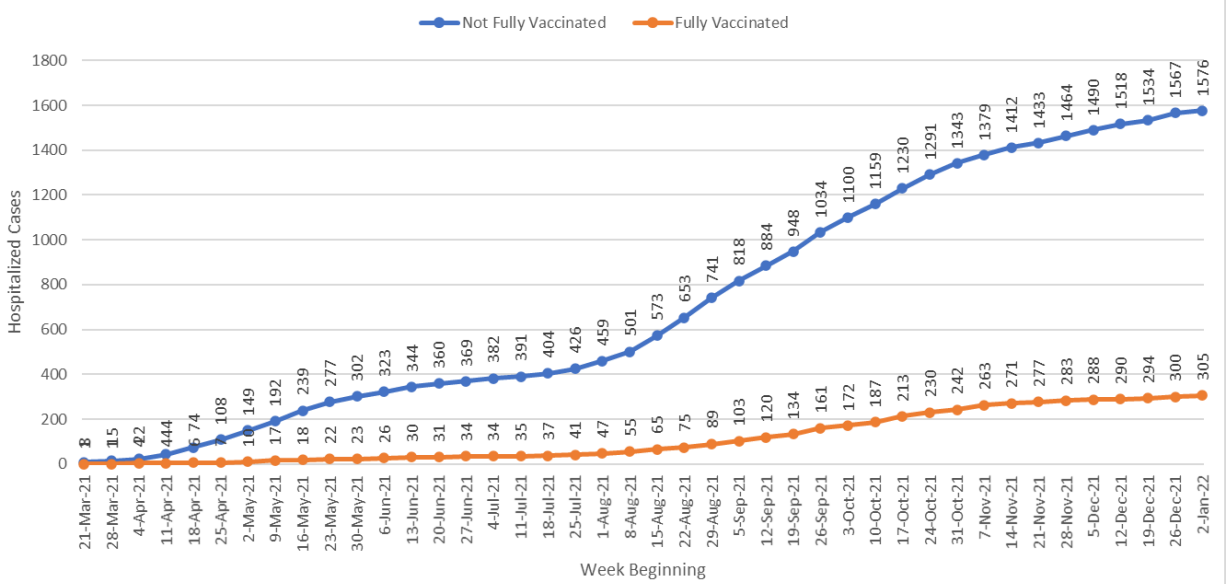
Source: EPIC, St. Charles Electronic Medical Record System

COVID-19 Treatments

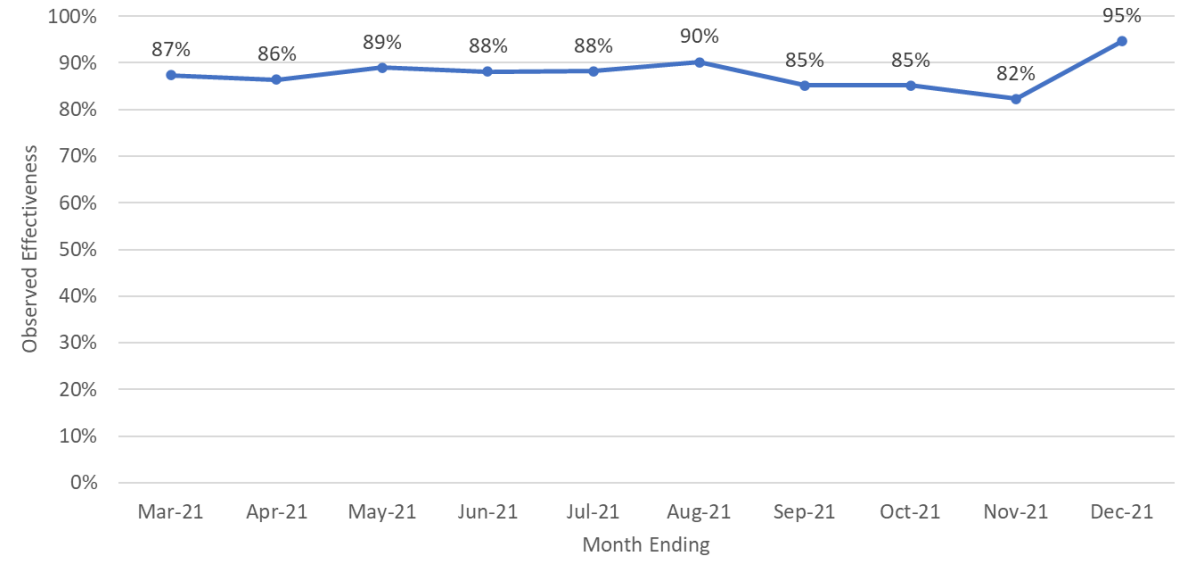
- New therapies are quickly becoming available for our most at risk population.
- Received approval and a small allotment of two oral therapies this past week.
 - One from Merck and one from Pfizer.
 - Quickly working on how to distribute these medications to our highest risk community members who are positive under guidance from NIH and OHA.
 - Collaborating with our community partners to serve our greater community at large.
- Switching monoclonal antibody treatment to a therapy that is still effective against Omicron. This is currently in short supply.
- Also (just this week) beginning to offer a long-acting monoclonal antibody to our cancer patient for pre-exposure prophylaxis under criteria from OHA.
- Strongly promote boosters and vaccine as our primary defense against the virus.

Central Oregon Vaccine Effectiveness

Cumulative New Hospitalizations by Vaccination Status
(Overall Breakthrough Rate = 16%)



Observed Vaccine Effectiveness Against Hospitalization Based on Cases
Not adjusted for Exposure Risk or Age-Related Vaccine Response
Calculated as: $1 - (\text{CasesVac} / \text{CasesUnvac}) * (\text{PctUnvac} / \text{PctVac})$



Note: Data through January 3, 2022
Source: EPIC, St. Charles Electronic Medical Record System



Questions and Comments

Michael Johnson, Ph.D.

Senior Data Scientist, St. Charles Health System

mjohnson@scmc.org
