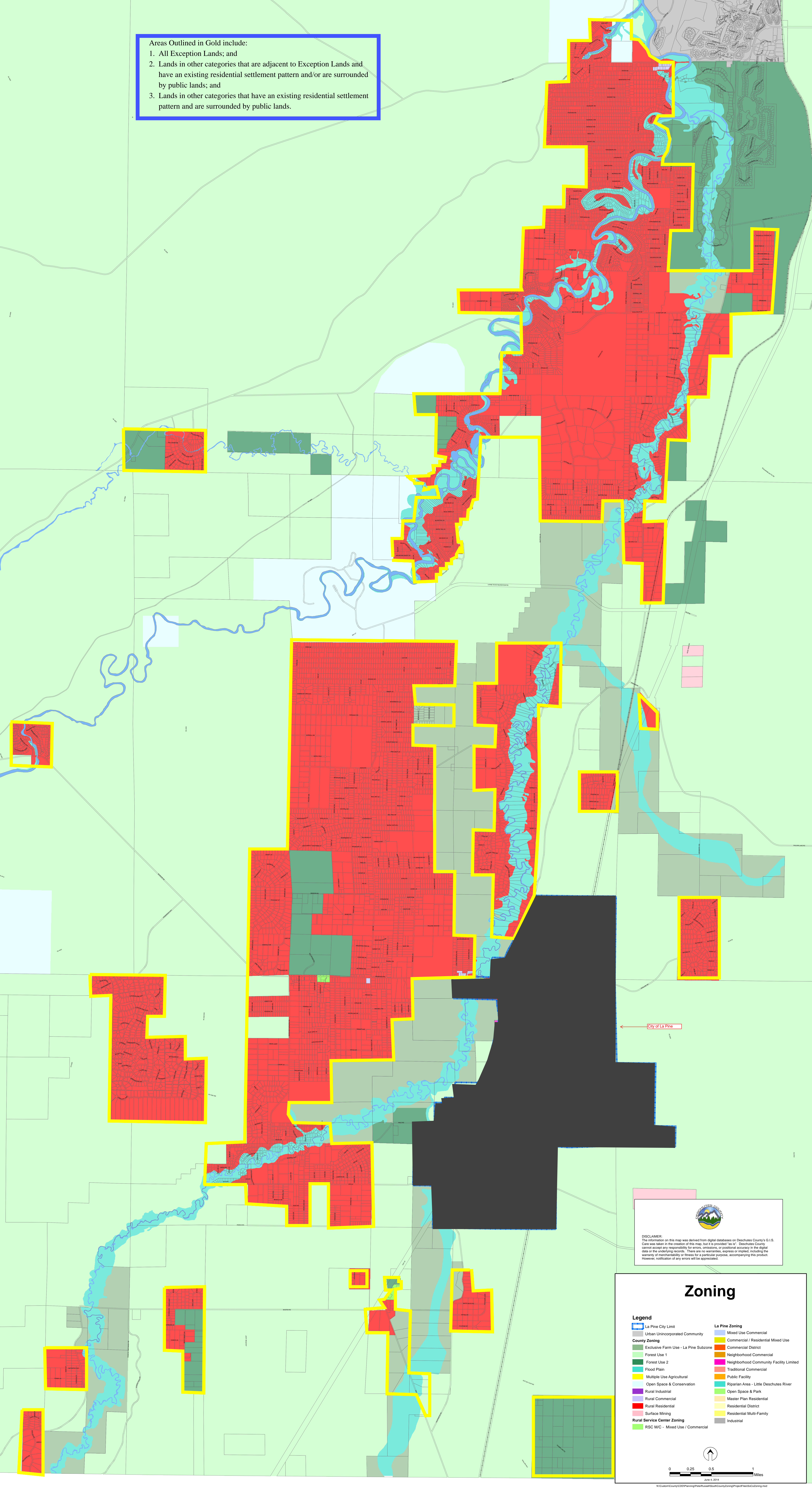


**Areas Outlined in Gold include:**

1. All Exception Lands; and
2. Lands in other categories that are adjacent to Exception Lands and have an existing residential settlement pattern and/or are surrounded by public lands; and
3. Lands in other categories that have an existing residential settlement pattern and are surrounded by public lands.



**DISCLAIMER:**  
 The information on this map was derived from digital databases on Deschutes County's GIS. Care was taken in the creation of this map, but it is provided "as is". Deschutes County cannot accept any responsibility for errors, omissions, or positional accuracy in the digital data or the underlying records. There are no warranties, express or implied, including the warranty of merchantability or fitness for a particular purpose, accompanying this product. However, notification of any errors will be appreciated.

**Zoning**

<b>Legend</b>	
La Pine City Limit	Mixed Use Commercial
Urban Unincorporated Community	Commercial / Residential Mixed Use
<b>County Zoning</b>	
Exclusive Farm Use - La Pine Subzone	Commercial District
Forest Use 1	Neighborhood Commercial
Forest Use 2	Neighborhood Community Facility Limited
Flood Plain	Traditional Commercial
Multiple Use Agricultural	Public Facility
Open Space & Conservation	Riparian Area - Little Deschutes River
Rural Industrial	Open Space & Park
Rural Commercial	Master Plan Residential
Rural Residential	Residential District
Surface Mining	Residential Multi-Family
<b>Rural Service Center Zoning</b>	
RSC M/C - Mixed Use / Commercial	Industrial

